

GET NOTICED WITH THE  
**DUAL COLOR, LOW-PROFILE**

**ALLEGIANT®**



## GET NOTICED WITH THE INCREDIBLY AFFORDABLE ALLEGIANT® LIGHT BAR.

Introducing **Allegiant®** from Federal Signal, a dual color LED, low-profile linear light bar. Built with our exclusive SpectraLux® multi-color LED technology, Allegiant produces an optimum warning capability and an impressive flood light feature in an affordable light bar.

With our Solaris® LED reflector technology, Allegiant has continuous off-axis warning. Solaris maximizes the LED light source to eliminate critical dark spots and distribute true 360-degrees of light coverage.

Allegiant includes other features as well; such as simple installation, dome color options, and more.



**Stock Models:**

The Allegiant stock models below are 12V, FS Convergence Network compatible, and include a low hook mount.



Number of LEDs:	Position	Single Color	Dual Color
	4" Reflector	6	12
	5" Reflector	6	12
	Corner	12	24
	Alley	3	6
	STT	6	–

- Each position can be single or dual color
- S/T/T positions single color only

Specifications:	Model	Voltage	Current Draw (12 Vdc)	Current Draw (24 Vdc)	Operating Temperature
	ALGT45J	12/24 VDC	9.0 A	5 A	-40°C to 80°C
	ALGT53J	12/24 VDC	11.0 A	6 A	-40°C to 80°C

Dimensions (D x L x H):	Model	Depth	Length	Height
	ALGT45J	11.2 in (28.4 cm)	44.5 in (113.0 cm)	2.0 in (5.1 cm)
	ALGT53J	11.2 in (28.4 cm)	52.7 in (133.9 cm)	2.0 in (5.1 cm)

Ship Weight:	Model	Weight*	Approvals:
	ALGT45J	23.0 lbs (10.4 kg)	SAE J845, Class 1
	ALGT53J	26.6 lbs (12.1 kg)	SAE J595, Class 1
	*With standard mounting feet		CCR T13, Class B IP65



2645 Federal Signal Drive, University Park, IL 60484-3167  
 Tel.: (800) 264-3578  
 www.fedsig.com

M1009 | 122021  
 Allegiant, SpectraLux, Solaris, Reliable OnBoard Circuitry,  
 Pathfinder, FSJoin and SignalMaster are trademarks of  
 Federal Signal Corporation.

©2018-2021 Federal Signal Corporation

# THE ALLEGIANT® LIGHT BAR

## DUAL COLOR, LOW-PROFILE.

From the leader in emergency warning technology.

Get noticed with the extreme LED technology optimizes wa

### EXCLUSIVE TO FEDERAL SIGNAL...

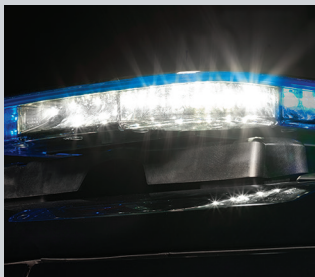
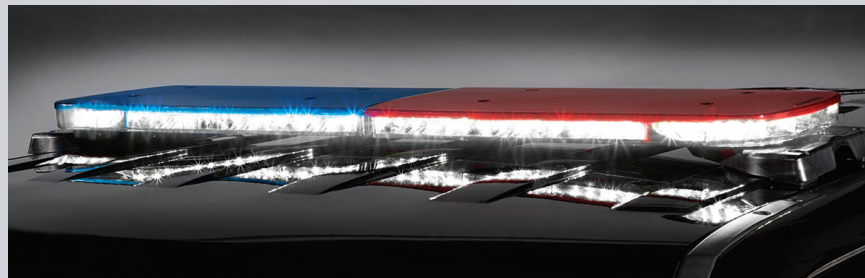
#### SPECTRALUX® MULTI-COLOR LED TECHNOLOGY

Exclusive to Federal Signal, SpectraLux multi-color LED technology provides the ability for a LED light source to change color. In each module of the light bar, through user selected flash patterns, the LEDs can change between Amber, Blue, Red and White (up to 2 in each module).



#### SPECTRALUX LIGHTS UP THE SCENE

At a steady position, in all White mode, SpectraLux provides an impressive flood light to quickly illuminate an emergency scene.



*Multi-Position Alley*



*Standard Alley*

#### SPECTRALUX ELIMINATES DARK SPOTS

With SpectraLux, Red/Blue warning patterns change to takedown and alley lights while in operation. The Allegiant can be configured with standard alleys or multi-position alleys.



low-profile, multi-color Allegiant light bar. The SpectraLux® multi-color warning performance and provides impressive warning light features.



#### **SOLARIS® LED REFLECTOR**

Built with Solaris LED reflector technology, the Allegiant light bar is engineered to significantly increase off-axis warning and maximize the LED light source to eliminate dark spots and increase visibility while on the road.



#### **ROC (RELIABLE ONBOARD CIRCUITRY™)**

ROC technology minimizes potential failure points in the light bar—replacing wires, connectors and assemblies with PCB assemblies to reduce labor repair time and increases road time for law enforcement personnel.

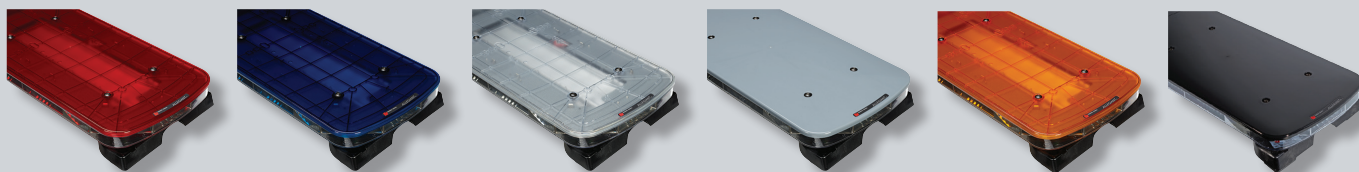


#### **FSJOIN™**

Programming is made easy with FSJoin in conjunction with Pathfinder® light/siren controller. Through the Convergence Network software, multiple warning devices can be programmed to synchronize in order to create a unified vehicle solution.

#### **DOMES COLOR OPTIONS**

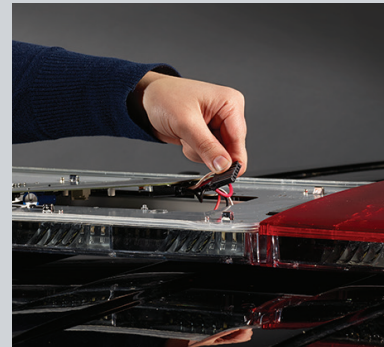
Allegiant is available with Red, Blue, Clear, Gray, Amber and Black domes.



## **SIMPLE** INSTALLATION AND PROGRAMMING

For maximum performance, the FS Convergence Network provides 'plug-n-play' installation. Utilizing standard RJ45 connections, the Allegiant can be easily programmed using a Pathfinder® light and siren controller. With control head programmability, the user can customize the keypad to meet their needs.

A serial interface module with your existing light controller can also be used to program and operate the features and functions of the Allegiant.



## **SERVICE IS A SNAP WITH THE ALLEGIANT**

Allegiant can be serviced while on the roof top. Remove screws, pick-up the dome and easily disconnect the ROC Board.



## **ADDITIONAL SYSTEM COMPONENTS**

### **MODEL VARIATIONS**

Offered in 45-inch, 53-inch, 61-inch, and 70-inch lengths

### **WARRANTY**

5-year warranty on LED components

### **DIMMING OPTION**

When activated, the dimming feature significantly reduces the light output intensity. An optional auto-dimming sensor is available in the Allegiant.

### **SIGNALMASTER™ OPTION**

The Allegiant is built with SignalMaster™ capability for directional warning.

### **MOUNT FEET**

For further customization of your vehicle, mounting options include permanent, flat, heavy duty flat, hook mount and low-profile hook feet.