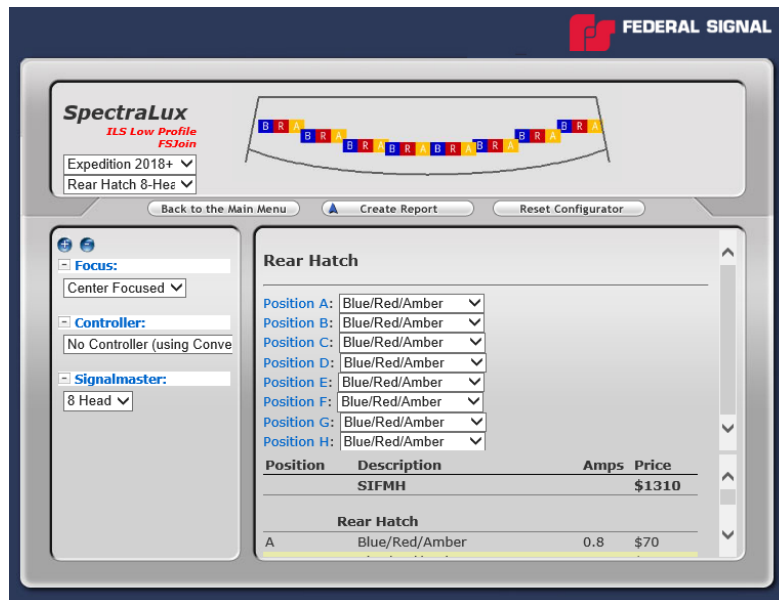




Rear Hatch ILS is Now Available for the Ford® Expedition® 2018+



The SpectraLux® ILS Low-Profile Center Focused Rear Hatch ILS is now available for the Ford® Expedition® 2018+. The rear hatch features a low profile design and vehicle specific shrouds allowing for a tight fit to the upper rear hatch of the vehicle.

FEATURES

- Eight-head, low-profile design
 - Suitable for internal mounting
 - SpectraLux® multi-color capability provides “Amber override” for directional lighting
 - Solaris® LED reflector technology for better optical efficiency and superior off-axis warning
 - FSJoin™ enables the synchronization and programming of light bars and exterior/interior lights that works in conjunction with the Pathfinder® Siren*
 - Models available with FS Convergence network for “plug-n-play” installation and programming
 - Discrete wired option for use with traditionally wired applications
 - LEDs available in combinations of Amber, Blue, Green, Red, or White
 - Manufactured in the U.S.A. at our University Park, Illinois, facility
 - Five-year LED warranty
- * Only serial-controlled models feature FSJoin™.



MU921 | 05-28-21

H O W T O O R D E R

Visit our [online configurator](#) to configure your own customer SpectraLux ILS Low Profile.

T I M I N G

The SpectraLux Center Focused Rear Hatch for the Expedition is available to order today.

All product names or trademarks are properties of their respective owners.